

LAS KIT



Lateral
Approach
Sinus Kit

OSSTEM[®]
IMPLANT



The Lateral Approach Sinus KIT (LAS-KIT) is specifically designed for a fast and safe lateral approach to lift the sinus membrane.

Placing dental implants in the posterior maxilla can be a particularly challenging surgical procedure because of the reduced bone height due to the presence of the sinus.

Hiossen® Implant's Lateral Approach Sinus Kit, or LAS-Kit, is designed for a safe sinus lift to aid in the augmentation of the sinus bone.

Benefits of LAS-KIT

- **Easy to use kit** - designed to minimize the number of steps involved in a sinus lift technique.
- **Highly versatile drill design** - allowing it to be used on sinus floors that are flat, inclined or over a septum.
- **Reduction in overall chair time, complications and patient discomfort.**
- **Adaptable** - LAS-drills can be drilled from 400 to 800rpm, allowing it to adapt to several different bone densities.

Features of LAS-KIT

- **Dome and core drills** - to create the lateral window for lifting the sinus membrane.
- **Dome drill** - minimises direct contact with the membrane by forming a bone lid.
- **Core drill** - round shape cutting edge minimises direct contact with the membrane.
- **Wide dome drill and side wall drill** - used to enlarge the window made with the dome and core drills.
- **Exceptional cutting ability** - with a combination of three macro blades and several micro blades, these drills are designed to push bone material toward the sinus membrane, aiding in the lifting of the sinus membrane.
- **Stopper system** - allows for more precise control over drill depth, with stoppers of 6 different lengths to prevent excessive and over drilling and prevent soft tissue damage.
- **Flexible** - The LAS-KIT offers various usage options, depending on the oral anatomy and surgical plans.

LAS KIT

Versatile and easy to use, the LAS-KIT is designed for a fast and safe lateral approach to lift the sinus membrane.

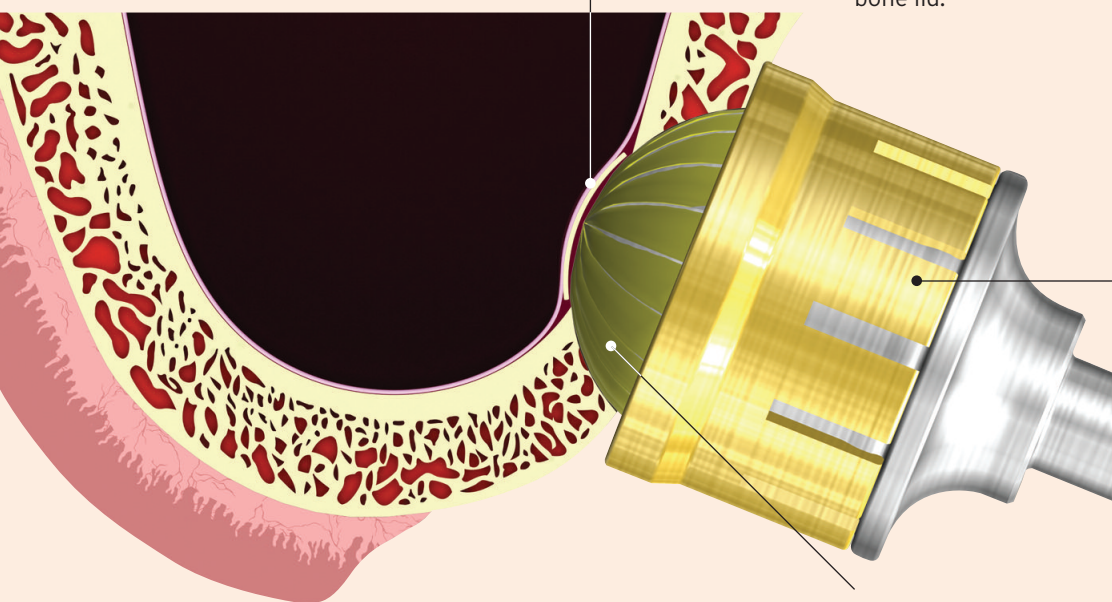
LAS-KIT contains:

Dome drill - to create a lateral window.

Wide dome drill - to widen the window.

Core drills - to create a core bone lid.

Dome Drill



Minimising direct contact with the membrane by forming a bone lid.



Effective depth control by using stopper system (0.5mm increments).

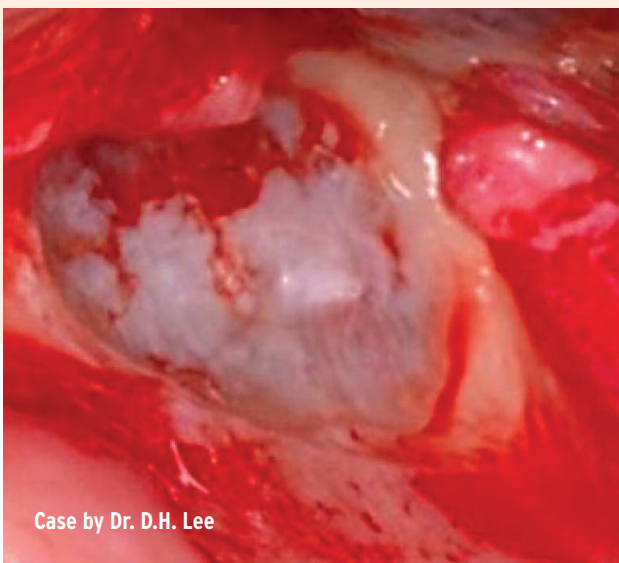
Prevents soft tissue damage.



Formation of bone particles between the cutting blades.

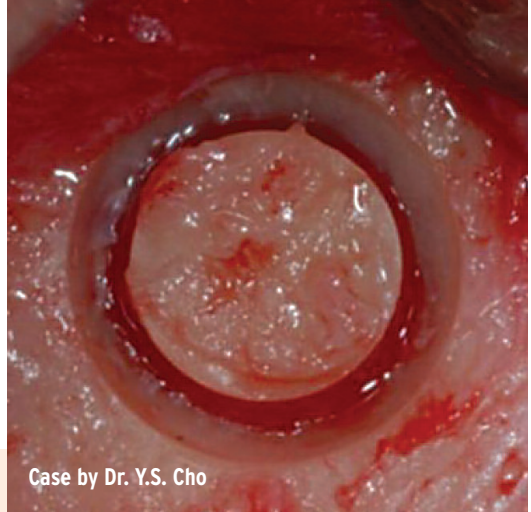
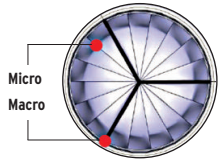
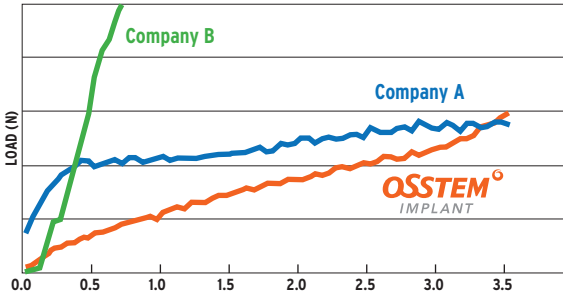


The blade head can be perpendicular to the bone to perform an osteotomy.



Case by Dr. D.H. Lee

Excellent cutting ability of the Dome and Core Drills.



Case by Dr. Y.S. Cho

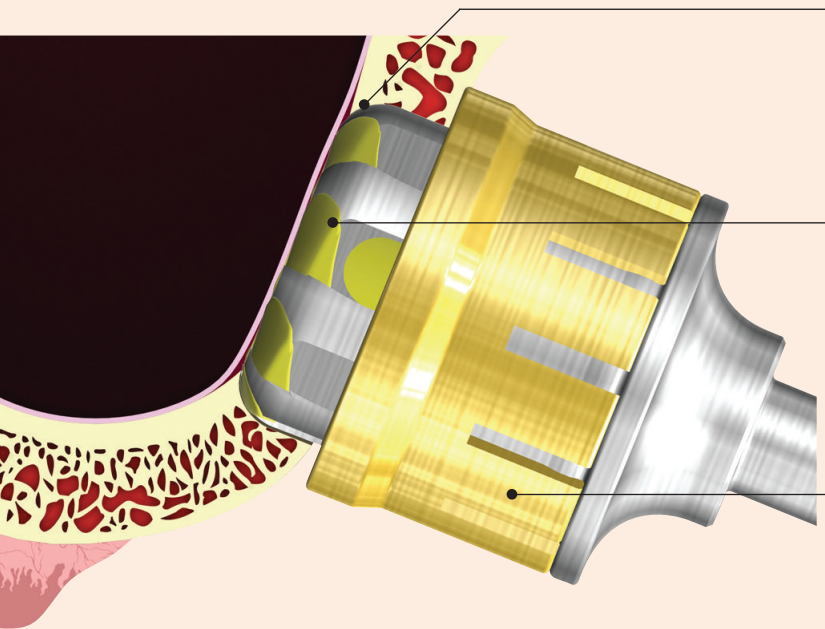
LAS Kit Components

Dome Drill

- Creates window while collecting autogenous bone.
- Macro and Micro cutting blades offer excellent cutting.
- Drilling depth is controlled with effective stopper system.
- Cutting Speed: 1,200 - 1,500rpm.



Core Drill



Round-shaped cutting edge minimises direct contact with the membrane.

Formation of bone particles between the cutting blades.



Effective depth control using stopper system (0.5mm increments).

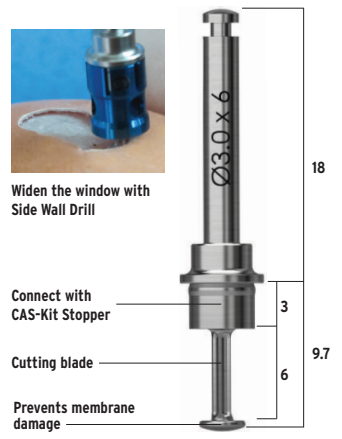
Prevents soft tissue damage.



For limited space at surgical site, Dome Drill can be tilted to drill.

Side Wall Drill

- Enlarges the window after using Dome drill.
- Can be used with CAS-KIT stoppers.
- Recommended to use cutting edge 1mm from the bottom.
- Cutting Speed: 1,500rpm.



Widen the window with Side Wall Drill

Connect with CAS-Kit Stopper

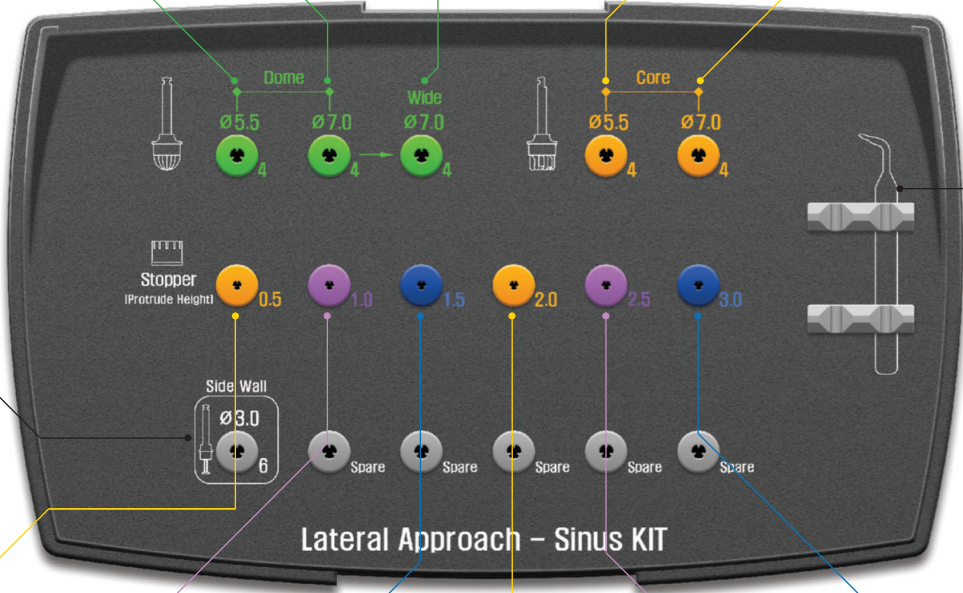
Cutting blade

Prevents membrane damage

LAS-KIT (HCRSNK)



Side Wall Drill Ø3.0
SWDR36T

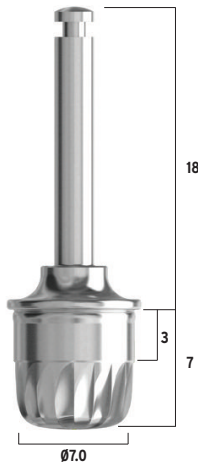


Bone Separator
HST75



Wide Drill

- Used to widen the window after using Dome drill.
- Excellent side cutting ability.
- Drilling depth controlled with effective stopper system.
- Cutting Speed: 1,200-1,500rpm.
- **Caution:** Over drilling may cause membrane perforation.



The Wide Dome Drill and Side Wall Drill are used to enlarge the window.



Core Drill

- Creates window whilst creating bone lid to minimise direct contact.
- Drill design follows the successful design concept of the CAS drills.
- Drilling depth controlled with effective stopper system.
- Cutting Speed: 1,300 - 1,500rpm.
- **Caution:** Over drilling may cause membrane perforation.



Stoppers

- Hiossen's unique stopper system for more precise depth control and prevent soft tissue damage. A total of 6 stoppers: 0.5/1.0/1.5/2.0/2.5/3.0mm.



SINUS KIT

Available to buy separately, the Sinus Kit contains the various tools required for the maxillary sinus membrane elevation and grafting procedure as well as the sinus procedure tool for lateral approach.

Kit product code: ASLK

