

Five Essential Tools to Achieve Surgical Convenience

Assist KIT

Five Essential Tools (KIT Components)

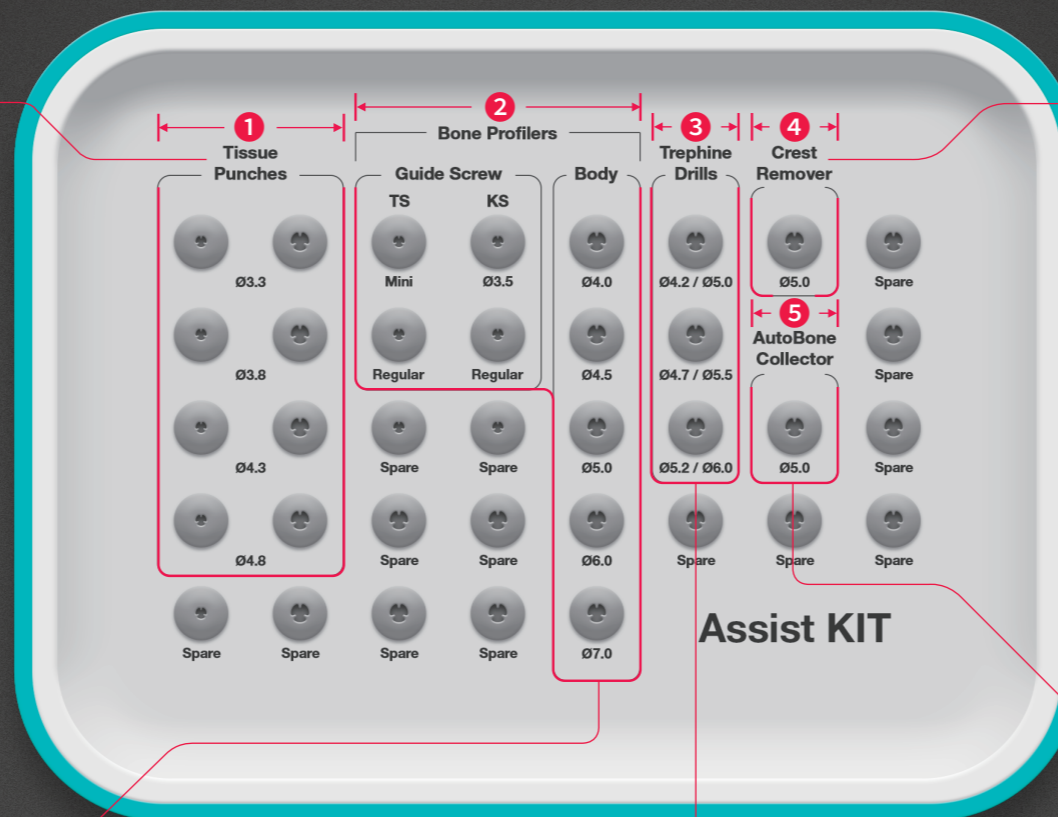
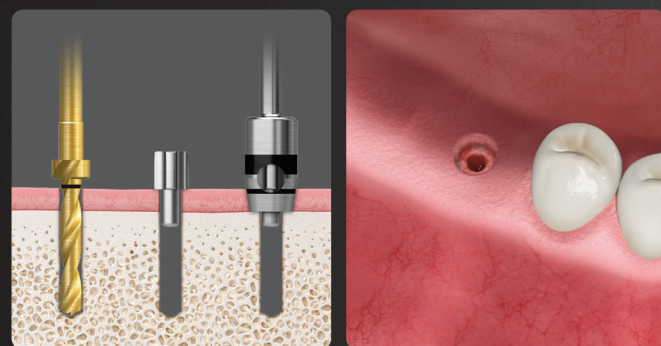
1. Tissue Punch 2. Bone Profiler 3. Trepine Drill 4. Crest Remover 5. Autobone Collector

1 Tissue Punch

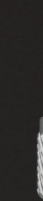


Reduces Healing Time by Minimizing Gum Incisions

- Guide-pin configuration allows tissue removal at the exact location
- Tissue punch with a diameter 0.7-1.5 mm smaller than the healing abutment is recommended

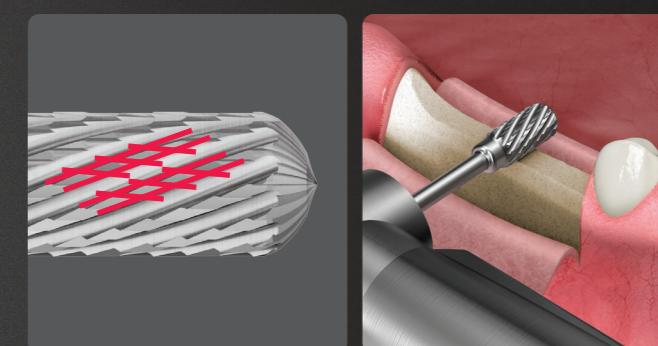


4 Crest Remover



Net-like Design Allows Fast and Simple Cleaning of the Ridge

- Blade is designed in a net shape to minimize the rim phenomenon compared to the round bur

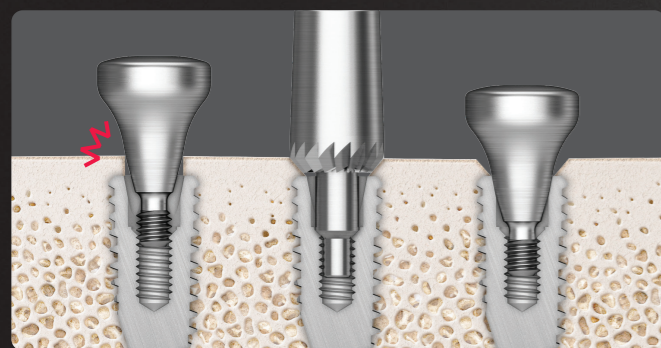


2 Bone Profiler



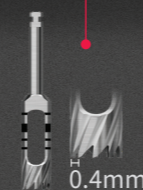
Convenient Bone Removal without Internal Damage of Implant

- Easier removal of protruding bones around the implant
- Detachable guide allows cleaning the bones without damaging the interior of the implant



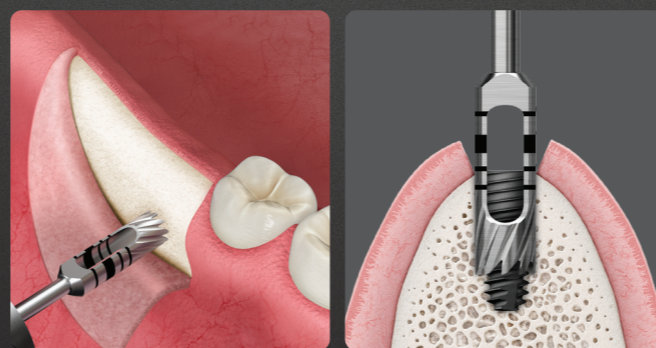
Bone Interference → Bone Removed → Normal Locking

3 Trepine Drill



0.4 mm Blade Thickness to Minimize the Amount of Bone Removed

- Excellent cutting force allows easy acquirement of block bone or remove failed fixtures-0.4 mm thickness on one side minimizes the amount of bone removed (more than other companies)



5 Autobone Collector



Easier Bone Collection Achieved Solely by Drilling

- Simple and quick to collect the chin bone with excellent cutting force and design
- Safer bone collecting procedure due to stopper (0.18 g acquired at one time)

